



The Fresno VOTER

Phone: 559-226-VOTE

Web site:
<http://fresno.ca.lwvnet.org>

BOARD OF DIRECTORS

OFFICERS

President	Francine Farber
Vice Presidents:	
Administration	Kay Bertken
Program	Georgia Sisson
Voter Services	Liz Shields
Secretary	Dolores O'Neal
Treasurer	Jane Worsley

DIRECTORS

Transportation	John Donaldson
Legislation	Terri Figgs
Natural Resources	Mary Savala
Membership	Sue Sheragy
At Large	Diane Woody

VOTER Editor

Carol Cowin

Calendar

August 29:

Film *Iron-Jawed Angels*

Free screening

CSUF McLane, Rm. 121

September 3:

Recruiting for Student Chapter
CSUF Free Speech Area

Volunteers Needed 10 a.m.—2 p.m.

Call Diane Woody 297-7621

September 9:

Education Committee 7:00 p.m.

Home of Kay Bertken,

752 E. Buckingham, Fresno

September 11: Mavoral Forum

On Poverty 5-8 p.m.

Convention Center

Henry T. Perea and Ashley Swearingen will debate and respond to audience questions

September 17: Board Meeting

League Office, 5 p.m.

September 26 : Women Speak Out

Big Red Church 9 a.m.—1 p.m.

Free seminar, lunch and childcare

STUDENT RECRUITMENT UNDERWAY FOR FRESNO STATE LWVF UNIT

By Diane M. Blair 278-8578

LWVF members are working on an exciting venture with California State University, Fresno with the goal of initiating a student unit of the Fresno League.

The LWVF committee has several events in the works to raise awareness about the League on campus and to invite interested students and faculty to start their own locally-affiliated student organization on campus. LWVF member and CSUF faculty member Diane Blair is the liaison and faculty advisor for the student unit; along with Sue Sheragy and Diane Woody she has been busy coordinating start-up efforts with the university community.

In order to apply for and receive official recognition as a student organization, at least fifteen regularly enrolled students

must be recruited as charter members.

Together with the League these students will then draw

up a constitution and submit the necessary materials to the office of Student Activities and Leadership Development at CSUF.

Once the organization is granted university status, our hope is to involve the new unit in our on-going activities like the mayoral forum and voter services activities, as well as encouraging them to organize voter registration drives on local college campuses and debates or forums on this year's ballot

See **Student Recruitment**, page 6



SHERIFF MARGARET MIMS SPEAKS AT AUGUST LEAGUE EVENT

By Murray Farber 226-5455

Even as darkness enveloped the annual Ice Cream Social, members of the League continued to pepper guest speaker Sheriff Margaret Mims with questions, clearly fascinated to learn details about the county jail system. The event, held Aug. 18 on the treed grounds of the home of Jennifer and Hugh Williamson, drew about 50 persons.

For more than an hour, Sheriff Mims described how "we are holding our own in fighting crime" but warned about the impact of budget cuts. Mims began her career in law enforcement in 1980 as Ker-

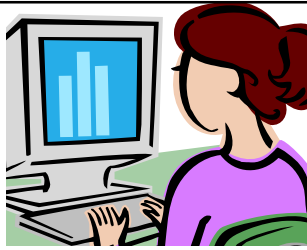
man's first woman police officer and went on to achieve female "firsts" in the county when she was appointed a sergeant, a K-9 dog handler, lieutenant, captain and assistant sheriff before she was elected to a four-year term as sheriff in 2006.

She now supervises 1,200 employees, including 400 deputies, 400 correction officers and 400 support staff of drivers, secretaries and other personnel. Meanwhile, she runs "the biggest bed and breakfast in the county" providing food, medical care and clothing for 3,500 men and women held

See **Sheriff Mims**, page 3

President's Message

Last month you read that we had invited representatives from the Mexican and Asian Women's Leagues to our annual retreat. We joined both organizations, and I had the pleasure of attending the annual Scholarship Luncheon of the Central California Asian Pacific Women's organization at Thai Palms Restaurant on July 26.



All the recipients were recent graduates of Valley schools. One young lady of Japanese heritage was the recipient of the Mae Takahashi Scholarship for \$1,000. Ms. Takahashi was a past president and founder who passed away in 2001. The other seven recipients were awarded \$850 each based on academic achievement, extracurricular activities and financial need. They were of various Asian descents, including Cambodian, Hmong, Hawaiian, and Asian Indian. Each scholarship winner was called to the podium and talked briefly about her goals for further education.

Guest speaker was Giang T. Nguyen, the director of the Fresno County Department of Behavioral Health, who herself was a scholarship recipient in 1983. She had been in this country for only two years "and I could barely speak well enough to get up and thank everyone," she said. She recounted her fascinating history. Her father had been a military official who after the fall of Saigon was sent to a "re-education" camp. He and other men were handcuffed in front of their wives and children and taken away.

Somehow Giang escaped from Saigon and spent nine months in a refugee camp in Malaysia. Her mother had stayed in Viet Nam and so with her father imprisoned as well, she was considered to be an orphan. People were anxious to adopt these orphans, she explained, and she announced that she wanted to come to Fresno, where an aunt lived.

When she arrived here at age 15 she had already finished high school but had to start over again at McLean because of her lack of English. Soon she took a test to go to the tenth grade and eventually finished high school here in two years.

Her father escaped from prison to a refugee camp and she sponsored him to come to the United States. She attended Fresno State University where she obtained her nursing degree and eventually worked in an acute psychiatric unit. Now she is preparing to finish her Ph.D. She is married with one teen-age son.

Francine

~FAREWELL~

Long-time member **Adrienne Jacobson** and her husband, **Paul Levy**, will be moving to Sacramento in September. Adrienne has been a loyal LWVF member since 1992 and a leader in many other Fresno activities. Farewell, and best wishes in your new community.

Fresno league members join the community in sending Adrienne's granddaughter, **Sada Jacobson**, congratulations on winning the silver medal in saber fencing at the Beijing Olympics.

BOARD MEMBERS ATTEND PROP 11 TRAINING SESSION

Jane Worsley, Mary Savala and Francine Farber attended a training session on Proposition 11, the California Voters First Redistricting Initiative, at the Fresno Chamber of Commerce office. The Chamber hosted the session because it has voted to support Prop 11, which will appear on the November general election ballot.

The meeting was led by Trudy Schafer, LWVC Senior Director for Program, and Tim Rosales, a member of the Prop 11 campaign committee staff. Participants were given a training notebook containing hard copies of a Power Point presentation about the proposition, as well as a disc to use when making presentations. Organizations that span a variety of political leanings have now signed on to support Prop 11. They include AARP, Common Cause, the California Democratic Council and the California Republican Assembly.

It is essential that Prop 11 is in place before 2011, when California is slated for redistricting. The proposition calls for a commission of 14 voters – 5 Democrats, 5 Republicans and 4 others – to draw district lines while observing a number of detailed criteria to ensure fairness and impartiality. Prop 11 will insure that voters have a voice in state government and that elected officials are held accountable. Currently, partisan gridlock prevents state lawmakers from effectively addressing pressing issues since their "safe" districts make them unaccountable to the voters. **See page 7 for more information on Prop 11.**

She's Got Letters — A profile of Board member **Diane Woody** was featured in the Sunday, August 10 issue of *The Fresno Bee's* column, "Meet our Letter Writers". Diane revealed that she had written 11 letters since 2006 and "hears only the positive comments" on them. We are proud that she acknowledged her membership in our League.

SHERIFF MIMS, continued from page 1

daily in the jails. "Starting at 7 a.m. every day, we move 300 to 400 prisoners to courts all over the county, getting the right person from the right floor, from the right cell, from the right bed to the right court."

Mims revealed that beneath M Street in Fresno, there is a tunnel and each day about 200 inmates are permitted to go unescorted from the jail to the courthouse for their appearance. They follow a green line that takes them to the elevators as surveillance cameras watch them move. However, the deputies have to keep members of rival gangs from being in the elevator at the same time. "There's an art to be sure that inmates don't hurt each other and we keep Cripps and Bloods away from each other," she said.

Describing the role of deputies in the field, Mims said there are about 400 available to cover 6,000 square miles of the county. If a deputy is in trouble, it may take 20 minutes for a backup to arrive so they "learn discretion; they learn the gift of gab and how to use their tools and to wait for assistance."

Mims admitted that she is worried about the cutbacks in her department's budget. Responding to an inquiry about being creative, she outlined how she is working with Fresno

Police Chief Jerry Dyer to merge the dispatch operation, the booking of suspects and finding a joint building for evidence. They are also attempting to find a single economic location for their helicopters, possibly around American Avenue, and to buy fuel in bulk as a savings.

Answering a bevy of League questions, Mims also related that inmates of the jail seldom take advantage of the available educational opportunities without a judge's order. She told of how a swat team tracked down and captured a murder one suspect near Aubrey, but came back with a case of poison oak. She described how her department is conducting a successful proactive campaign against gangs. **The Southeast team of deputies who investigated seven killings last year has had none to investigate in 2008.**

And yes, she agreed, she would like to have more women in her department. Women comprise 30 percent of the correction office, assigned primarily to guard inmates within the jail, but women make up only 11 percent of the deputy force.

Thanking the sheriff for her talk, League President Francine Farber gave her a League wristwatch with the slogan "Time to Vote."

HOW WOULD YOU LIKE TO GO TO JAIL?

Sheriff Mims has provided an opportunity for LWVF members to take a tour of the downtown jails. Two dates have been provided.

Dates: Tuesday, September 23
Wednesday, October 22

Time: 10 a.m. to noon either day (participants may leave early if necessary)

Place: 1225 M Street, NW corner of M and Fresno Streets. Metered parking available, or underground in courthouse lot.

Slow walking, no stairs. Elevators available. Members will be escorted in groups of 10.

Participants will tour the men's and women's jails with an experienced deputy sheriff guide to answer your questions.

You need to sign a release prior to your participation. It will be sent to you upon registration for this event.

Members who would like to have an optional discussion after the tour may decide to have lunch together at an informal downtown restaurant. Suggested place will be provided closer to the date.

If interested in either date please call Francine Farber at 226-5455, or email her at fmfarber@hotmail.com

MENTAL HEALTH: The Butterfly Effect

By Jul Lowery 476-0010



Mental Health care in Fresno is exhibiting features of the Butterfly Effect --- the idea that something as innocuous as a butterfly flapping its wings can set in motion a series of events that are unpredictable, seemingly unrelated, and hugely out of proportion to that one little flap.

In our case, we are beset by multiple butterflies, some of which have taken the unlikely form of 4,000 lb. SUVs and other new cars sitting unsold in dealerships across Fresno County. Because of an uncertain economy and higher gas prices, new vehicle purchases have dropped, leading to a corresponding drop in vehicle license fees. The county had predicted an increase of about \$1 million in these revenues for this fiscal period. The actual figure will be about \$2.3 million less than anticipated, the first time since the early 1990's that these fees have failed to meet projections. **Because vehicle license fees provide a significant revenue stream for Health and Human Services programs, in-**

cluding mental health, any drop in new vehicle sales leads to a corresponding drop in funding. Combined with cuts set in motion due to the existing budget shortfall and Medi-Cal reductions, the net effect is a further decline in funding to a part of our health care system that is already struggling from past cuts.

What makes mental health care particularly vulnerable to the effects of budgetary constraints is that state law does not provide for treatment for mental illness on an as-needed basis, but rather "as resources are available." Mental health care becomes one of the limited options lawmakers have for making cuts since other areas of the budget are mandated for funding to achieve specified outcomes. Over time, public mental health care funding has declined across the United States, not just in Fresno County. **While severe mental illness afflicts 6-8% of the general population, only 1-2% of these cases are being served by the public system.** However, while existing programs are experiencing

service reductions, revenues from the Mental Health Services Act are being allocated to create new programs. Plans are going forward to hire licensed clinicians for the newly formed mental health court and for intensive case management in rural areas impacted by clinic closings. Progress is being made on plans to start an inpatient adolescent unit, sorely needed in a county that currently ambulances about 80-90 children a year to other counties for hospitalization. **There are also plans to develop a one year psychiatric nurse practitioner training program locally with the goal of training 10 nurse practitioners a year. Another proposal is local residency training for a child psychiatrist. These latter two initiatives are meant to address the serious shortage of medical staff locally. The irony is that these proposals are being made while the primary system of care continues to contract due to cut-backs.**

LAND BUFFER TASK FORCE

By Joan Lipton 229-8486

The Land Buffer Task Force met on July 25 at the Council of Governments office. Task Force member participants vary so it is always necessary to review previous business.

Fred Thompson of The American Farmland Trust presented six items for discussion:

- 1) Buffers should be established around most cities.
- 2) The primary purpose of land buffers is to protect agriculture.
- 3) Agriculture should be the principal use within the buffers.
- 4) Buffers should be

one-half mile wide. 5) Buffers should accommodate urban growth. 6) LAFCO and the County should agree on buffers.

Other comments were that unincorporated cities should be included and that long term stability be a goal. We have to remember that agriculture produces both noise and dust and uses chemicals. There are trade-offs between development and protection which must be balanced.

John Wright of Clovis stated that three buffer basic concepts need be discussed: separation, agricultural preservation, and transition land. The group will meet again in an effort to come to a consensus. Members will at-

tempt to work out the details of the proposal. **There is a strong commitment to form buffer zones.** The Task Force proposal will be brought before the Board of Supervisors after being refined.



EDUCATION

By Kay Bertken 226-2720

On July 30 the **Board of Education met in joint session with the Fresno City Council at Olmos Elementary School** in downtown Fresno to discuss three major topics of mutual interest.

First, school district staff **introduced the District's master planning activities for facilities, which will have major implications for the quality of city neighborhoods** as well as the immediate experience of students and school staff. Councilman Cynthia Sterling expressed particular interest in the plans for building a new middle school in southwest Fresno.

A second topic involved **cooperative ventures in recreation programs and a mutual commitment to the negotiation of a new joint use agreement for school grounds and facilities.**

The last topic of the morning was a **discussion of safety concerns involving the schools and current police engage-**

ment with the schools. Both the School trustees and the council members spoke enthusiastically about working together on these programs and others.

The regular Board meeting included a preliminary Board discussion of the district dress code. The Trustees are of very different minds with respect to reforming that code, but all

...meeting included a preliminary Board discussion of the district dress code. The Trustees are of very different minds with respect to reforming that code, but all agree that it should be simplified and enforced

agree that it should be simplified and enforced. Future discussions promise to be lively.

On that same day the Board participated in a workshop on the facilities master planning activities. Carter-Burgess, consultants for this process, have completed an extensive evaluation

of every school campus and the District support sites. **Site visits, document review and interviews have generated a site-by-site evaluation score to guide building and renovation efforts.** Consultants are currently working with staff to rationalize the feeder progressions from elementary to middle to each high school.

Voter Services

By Liz Shields 298-5183

Constitution Day

Our League received a \$500 grant from LWVUS to host an event for Constitution Day. I am working with Maika Yang at Stone Soup and Lue Yang at the Center for New Americans to set up visits and presentations at the Superior Courthouse and City Hall. Both Maika and Lue are concerned that many new green card holders do not continue the citizenship process believing that this is not necessary. Under normal circumstances this is not a problem; however, if a green card holder is convicted of certain crimes he/she does not have the same constitutional protections as a US citizen and may be deported or denied reentry into the US after an overseas visit. The message we are planning to emphasize on Constitution

Day is the importance of becoming a citizen, with its legal protections and civic responsibilities.

November Election

We will be taping candidate forums for the contested Congressional and Assembly races as well as the mayoral



race and the FUSD board district races at Comcast studios on October 14 and 15. Bill Murphy will be the moderator. Invitations to the candidates were sent out in late August. Later I will be contacting you all for suitable questions.

We have already received several calls for proposition presentations in October and two requests for advice on holding a candidate forum from San Joaquin Gardens and a young Asian-American group.

I have ordered 5000 English copies of Easy Voter Guide and 1000 copies in Spanish.


On August 21 we provided training for voter registration to volunteers at Veterans Hospital, and may do the same for young Asian-American and Hispanic volunteers who will be conducting voter registration drives in their respective communities.

On October 4 we will conduct voter registration in Madera at a Family Fun Day hosted by Madera Special Needs organization.

True wealth is about more than money. It's about achieving life.®

Let us help you achieve what matters most to you.

Amy Nuttall-Zwaan
Financial Advisor
(559) 436-3338
5260 N. Palm Avenue
Suite 100
Fresno, CA 93704



© 2008 Merrill Lynch, Pierce, Fenner & Smith Incorporated. Member SIPC.

TOTAL MERRILL®

LAND CONSERVATION REGULATIONS

By Terri Figs 431-4274

On February 26 county staff conducted a workshop before the Fresno County board of supervisors regarding the **County's administration of the Williamson Act Program. Several Topics were discussed including the County's current adopted minimum parcel size for enrollment of non-prime designated land into the Program.** Direction was given to staff to increase the current 40 acre minimum parcel size for contract enrollment.

On August 6 the Agricultural Land Conservation Committee held a workshop to consider testimony from affected land owners and farming interests and make a recommendation to the Board of supervisors regarding revisions of the minimum contract for commercial agricultural operations on non-prime farmland restricted under a Williamson contract. There were about 125 people present, with about 15 people speaking. **Most who spoke were in favor of keeping the minimum the same.**

The Committee determined that they didn't have enough information to make a specific recommendation at this time. Staff suggested a joint workshop with the Board of Supervisors. Possible dates are: August 26, September 9, or September 17.

LWVC RECOMMENDS:

Proposition 1—High-Speed Rail Bonds (Decision Pending)

YES on Proposition 3—Children's Hospital Bond Act

NO on Proposition 4—Waiting Period and Parental Notification before Termination of Minor's Pregnancy

YES on Proposition 5—Nonviolent Drug Offenses. Sentencing, Parole and Rehabilitation

NO on Proposition 6—Police and Law Enforcement Funding. Criminal Penalties and Laws.

NO on Proposition 7—Renewable Energy Generation

NO on Proposition 8—Eliminates Right of Same-Sex Couples to Marry

NO on Proposition 9—Criminal Justice System. Victim's Rights, Parole

NO on Proposition 10—Alternative Fuel Vehicles and Renewable Energy. Bonds

YES on Proposition 11—Redistricting Reform: California Voters FIRST Act

Because League positions do not cover the issues on **Proposition 2**, Standards for Confining Farm Animals, and **Proposition 12**, Veteran's Bond Act of 2008, the League is taking no stand on these issues.

STUDENT RECRUITMENT , continued from page 1

propositions.

The committee has planned several activities for our initial recruitment campaign. During the first week of classes on

...in conjunction with the campus Women's Resource Center will be celebrating Women's Equality Day....

...participating in a panel discussion following the Cineculture-sponsored showing of the film,

Iron Jawed Angels...

...host an information table and recruit student volunteers as part of CSUF's Annual Community Service Opportunities Fair.

Tuesday, August 26, the League in conjunction with the campus Women's Resource Center will be celebrating Women's Equality Day and passing out voter registration materials. We will also be participating in a panel discussion following the Cineculture-sponsored showing of the film, *Iron Jawed Angels* on Friday, August 29. This film is free and open to the public and begins at 5:30 pm on campus in McLane 121. All interested League members are invited and encouraged to attend this fascinating film about Alice Paul and the Women's Suffrage Movement at the turn of the century.

In addition, the League will host an information table and recruit student volunteers as a part of CSUF's Annual Community Service Opportunities Fair. We are hoping that our participation in these initial events will generate enough student interest for a student meet-up and planning event by the second week of September to form the student chapter.

Volunteers are needed to staff the Community Service Fair information table scheduled for Wednesday, September 3 between the hours of 10am-2pm. If you are interested in helping out, please contact Diane Woody at 297-7621.

League of Women Voters Fresno

IS ON THE WEB

<http://Fresno.ca.lwvnet.org>



Details on Proposition 11: Background: What is redistricting?

Every 10 years, after the census, new boundary lines for Congress and CA Senate, Assembly and Board of Equalization districts are drawn. Currently, the CA State Legislature draws those lines. This is a major conflict of interest.

How would California Voters FIRST Act change redistricting?

14-Person Citizens Redistricting Commission. The California Voters FIRST Act would create a politically balanced Commission - 5 Democrats, 5 Republicans, 4 others. Commissioners would be chosen for their impartiality, skills, and to reflect our State's demographic and geographic diversity.

Protecting communities, cities, and counties. The California Voters FIRST Act would create a list of prioritized mapping criteria for the Commission to follow. This would ensure that our Constitution, federal and state laws are followed. California's communities, cities, and counties must be respected.

Open and public process. The Commission would hold hearings to receive public input. The California Voters FIRST Act would end the closed-door political deals by legislators to draw districts that protect themselves.

How would the Commission be formed?

- A pool of 60 (20 Ds, 20 Rs, 20 others) is selected based on their skills, ability to be impartial, and diversity by a review panel of state auditors (1D, 1R, 1 other).
- The 4 Legislative Leaders can strike up to 24 people from the pool.
- Out of the remaining pool, 8 Commissioners are randomly picked - 3 Ds, 3 Rs, 2 others.
- The final 6 Commissioners (2 Ds, 2 Rs, 2 others) are chosen by the 8 Commissioners from the remaining pool based on the balance of skills and diversity they would bring.

What Mapping Criteria would the Commission have to follow? In ranked order, the criteria are:

- a. Districts shall comply with the US Constitution, including equal population requirements.
 - b. Districts shall comply with the Voting Rights Act.
 - c. Districts shall be geographically contiguous.
 - d. The geographic integrity of any city, county, or city and county, neighborhoods, or communities of interest shall be respected. Communities of interest shall not be defined as having a relationship with incumbents, candidates, or parties.
 - e. To the extent possible, after the above criteria have been satisfied, districts shall be compact.
 - f. To the extent possible, after the above criteria have been satisfied, districts shall be nested.
- Incumbent residences may not be considered; districts may not be drawn to favor politicians or parties.

What is the scope of the Citizen's Redistricting Commission?

- The Commission will draw California Senate, Assembly and Board of Equalization seats in the next redistricting, 2011 and after each decennial census.
- The State Legislature will draw Congressional seats, following the same mapping criteria and hearing requirements as the Commission.

Please go to www.commoncause.org/cavotersfirst for more information and to read the full initiative.

We are grateful to our sponsors for their support in "Making Democracy Work."

League members who wish to be sponsors or to secure sponsorships for us, may contact Francine Farber at 226-5455

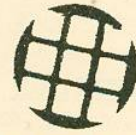
PATIENCE
MILROD

LAWYER/LICENCIADA EN LEYES

844
North Van Ness
Fresno, California
93728
559/ 442-3111
pm097@csufresno.edu



Congratulations
League of Women Voters
for
another successful year
of service
to our community



HEBERGER
& MERRITT INC

Certified Public Accountants

John W. Heberger, CPA, CVA

Gayle T. Merritt, CPA



PRINT
SHACK

Bruce Tamiyasu
Owner

(559) 221-0768

379 E. Shaw at Fresno • Fresno, CA 93710

FAX (559) 221-0760 • printshack@gmail.com
Free Pick Up & Delivery

Joe Figgs



J Figgs Real Estate Brokerage

1576 W. Minarets
Fresno, CA 93711

Phone 559-431-7274

Cell 559-779-3952

Fax 559-432-6608

Email: jfiggs@comcast.net

Between Barstow & Bullard

5680 N. Fresno St., Ste. 110
Fresno, CA 93710-8331

Frederick J. Kruger, D.P.M.
Diplomate, American Board of Podiatric Surgery
Diseases, Injuries and Surgery of the Foot

(559) 447-9040
FAX (559) 447-9042

By Appointment



Lee Horwitz
President

Home: (559) 439-5802

160 E. Bullard
Fresno, CA 93710
(559) 448-1000
Fax (559) 448-1010

4495 W. Shaw
Fresno, CA 93722
(559) 276-4222
Fax (559) 276-6519

1848 Clovis Ave.
Clovis, CA 93612
(559) 323-1940
Fax (559) 298-9934

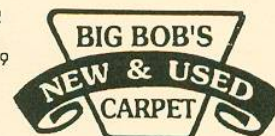
50 years | one million eyes

EYE-Q
Latest technology. Caring doctors.

1 (800) DR-VISION or (559) 486-2000

www.eyevisioncare.com | Fresno | Selma

4495 W. Shaw
Fresno, CA 93722
(559) 276-6536
Fax (559) 276-6519



Lee Horwitz
President
chiamleb18@aol.com

3845 N. Blackstone • Fresno, CA 93726
(559) 226-3939 • Fax (559) 230-1201

1848 Clovis Ave.
Clovis, CA 93612
(559) 324-1922
Fax (559) 298-9934

Fresno Works for Better Health Advocacy Center invites you to attend

THE WORLDS APART, FUTURES TOGETHER

Mayoral Forum on Poverty and Possibilities

SEPTEMBER 11, 2008 FROM 5 P.M. UNTIL 8 P.M.
Convention Center's Exhibit Hall, second floor, rooms 2015-2018

Light refreshments will be served from 5:00–5:45 p.m. The forum begins promptly at 6:00 p.m.

FIND OUT HOW THE CANDIDATES PROPOSE TO ALLEVIATE POVERTY IN FRESNO.

As part of the forum, we are asking attendees to bring non-perishable food items for the Community Food Bank

The 2008
WORLDS APART, FUTURES TOGETHER
Mayoral Forum on Poverty
will feature a debate between Fresno's two mayoral run-off candidates.

The candidates will be questioned on what they see as an inclusive, realistic platform to address the issues surrounding chronic poverty and health disparities in the City of Fresno.

The forum will provide a thoughtful discussion to determine which of the candidates is most capable of providing the necessary leadership required to make amelioration of poverty a top priority.

The debate will be moderated by Dr. Manuel Pastor, author and professor at the University of Southern California, where he directs the Program for Environmental and Regional Equity.

The audience will have the opportunity to meet with the candidates from 5 p.m. until 5:45 p.m.

Questions from the audience will be encouraged.

CO-SPONSORS



**Fresno West Coalition for Economic Development
Fresno Center for New Americans
One by One Leadership Foundation**

Black Women Organized for Political Action
Blue Mountain Associates
Central California Legal Services
Centro La Familia
Children's Health Initiative
Fresno Business Council

Fresno Housing Alliance
League of Women Voters
Political Black Council
San Joaquin Valley Black Caucus
West Fresno Concerned Citizens
United Way of Fresno County





League of Women Voters Fresno, Inc.
1345 Bulldog Lane, Suite 4
Fresno, CA 93710

Non-Profit Organization
US Postage Paid
Fresno 93706

Permit # 896

RETURN SERVICE REQUESTED

INSIDE THIS ISSUE

Student League Unit.....	Page 1
Sheriff Mims Speaker.....	Page 1
President’s Message.....	Page 2
Proposition 11 Training.....	Page 2
Downtown Jail Tour.....	Page 3
Mental Health.....	Page 4
Land Buffer Meeting.....	Page 4
Education.....	Page 5
Voter Services.....	Page 5
Land Conservation.....	Page 6
LWVC Proposition Recommendations....	Page 6
LWVC Summary of Proposition 11.....	Page 7
Sponsors of <i>The Voter</i>	Page 8
Mayoral Forum Flyer.....	Page 9

Democracy is not a spectator sport

Address:

Name:

Ph. E-mail

Please send your check payable to the League of Women Voters, Fresno, with registration form (below), to: LWVF, 1345 Bulldog Lane, Suite 4, Fresno, CA 93710.

Yearly Dues Individual - \$60 ~ Family - \$90 (2 members, same address) ~ Student - \$30

JOIN US! Members receive newsletters from national, state and local Leagues, may access local, state and national League websites and list-serves, and may participate in League studies of issues.

TO PROSPECTIVE MEMBERS: For more information, please leave your name and phone number on the League message phone, 226-8683, or contact our **Membership Chair, Sue Shery, at 243-9305**. Prospective members receive one issue of *The Fresno Voter* free.

DIVERSITY POLICY: There shall be no barriers to participation in any activity of the LWVF on the basis of race, creed, national origin, gender, sexual orientation, disability, or socio-economic level.

NONPARTISANSHIP: The League does not support or oppose any candidate or political party.

MISSION: The League of Women Voters is a nonpartisan political organization that encourages the informed and active participation of citizens and influences public policy through voter education and advocacy on issues.

JOIN THE LEAGUE OF WOMEN VOTERS!
Men and Women of Voting Age Making Democracy Work